

Customer :

customer

Customer part :

customer part

Comment :

Comment

S1=2.79

S2=4.04

Tmax=460

Tp S2=499.0

PI=0.41

HI=120

Sample =1648.10

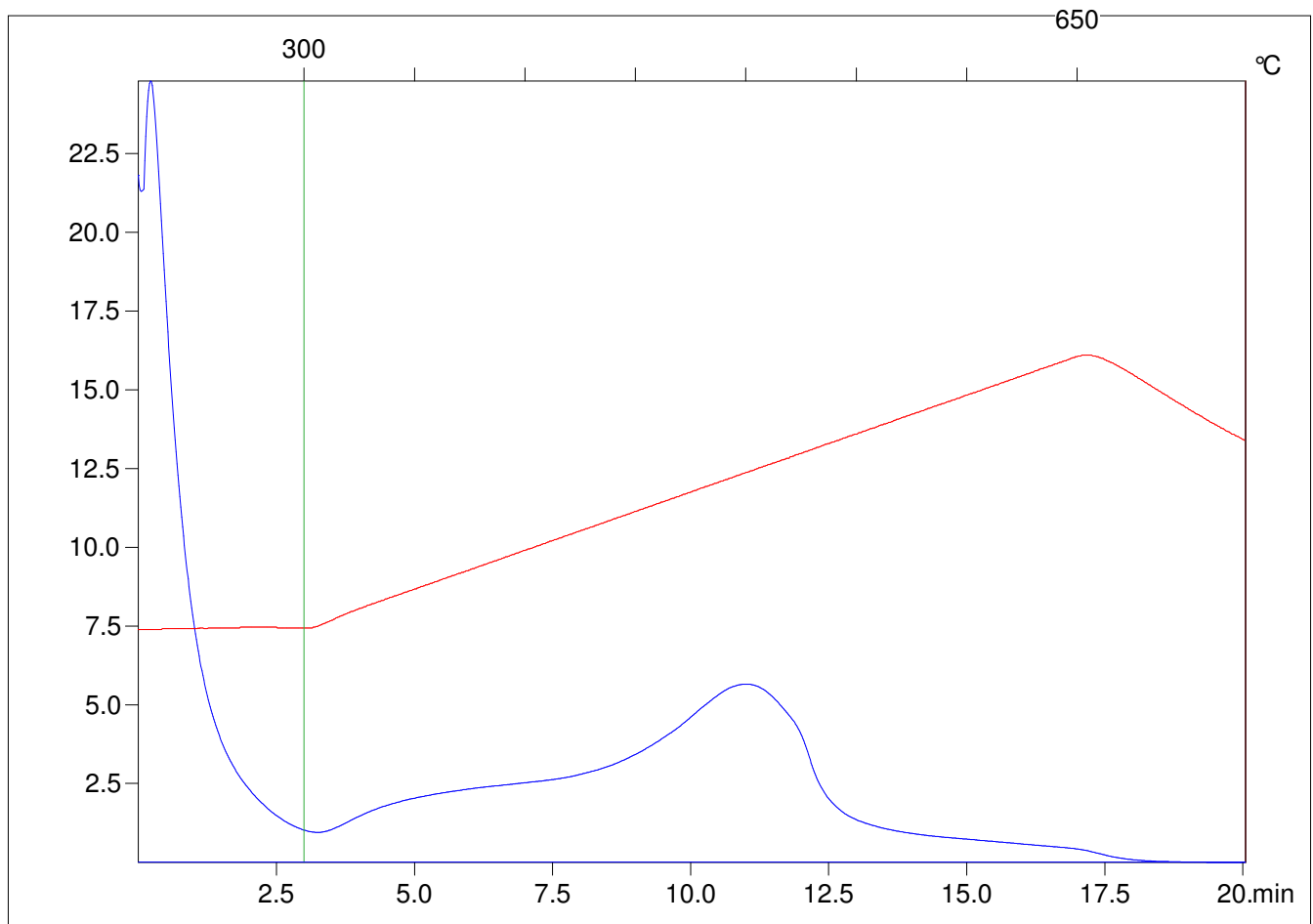
Method =Bulk Rock

Cycle=Basic

KFID(10\*9)=1444

Qty =71.0

TOC=3.37



C:\VINCI\PK1792\PK060.R00 : FID pyrolysis graphic

State

Pyro Status

Oxi Status